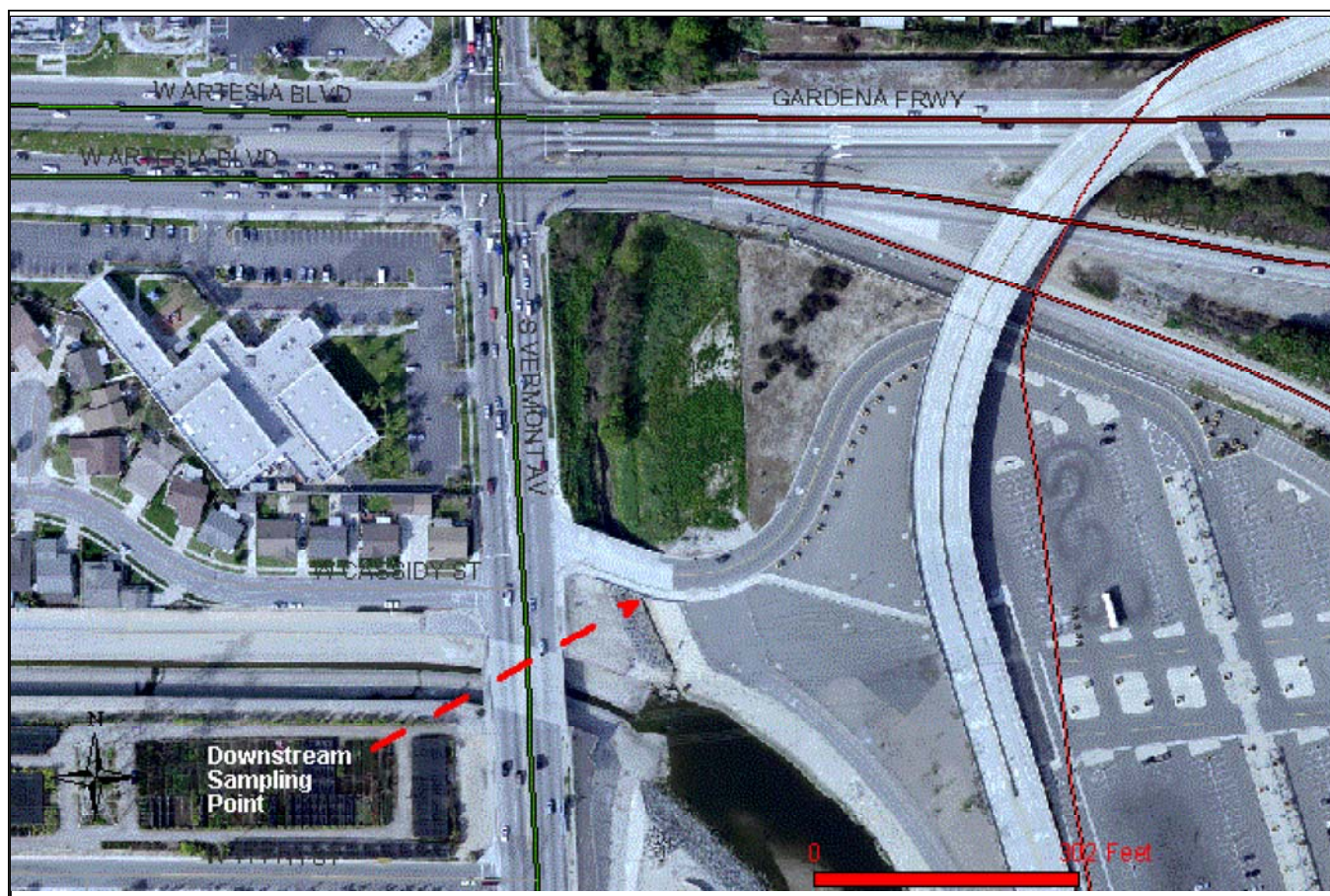


LOS ANGELES COUNTY DEPARTMENT OF PUBLIC WORKS



NOTES:

Figure 2: Downstream sampling point (#3) located in the bottom of the open-trapezoidal concrete channel on the south side of and directly below the overpass entrance to the Artesia Transit Center; sampling point about 95' e/o Vermont Ave. as measured along the sidewalk on the south side of the overpass.



LOS ANGELES COUNTY
DEPARTMENT OF PUBLIC WORKS
900 S. Fremont Ave.
Alhambra, CA 91803

Project 74 SBC Cleanout Fall 2012 - WQ Monitoring
(Printed using View LA 24-Oct-12)



Data contained in this map is produced in whole or part from the Thomas Bros. Maps® digital database. This map is copyrighted, and reproduced with permission granted by Thomas Bros. Maps®. All rights reserved.

Data contained in this map was produced in whole or part from the Los Angeles County Department of Public Works.